



Prompt Report by Oodori Police Box

嘉手納警察署大通交番 TEL956-0110 (内線502または292)



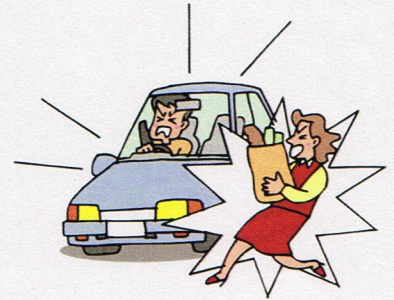
Warning to Speeding Vehicles

~Children and elderly feel unsafe and anxiety about over speeding~

The maximum speed limit for most of the roads running south to north within a Mizugama area is 30km/h.

Crosswalk is priority for pedestrians. Most residents, especially children and elderly in the area crossing at the crosswalk to go to school or community center, feel unsafe when vehicles travel at the speed 50-60km/h within the area.

In the past, there had been vehicles strayed onto the opposite traffic lane as a result of avoiding hitting students walking on a sidewalk.



[Request to drivers]

1. Regardless of traffic lights, please completely stop when you see pedestrians awaiting on the sidewalk to cross the road. (Pedestrians have priority.)
2. Please follow traffic signs and road markings. (Driving slowly enables you to prepare for unexpected circumstances and avoid an accident.)
3. In case of children running into the street, please be cautious and drive safely even if you have clear visibility while traveling.

We enforce the law and conduct a variety of activities such as patrol and public relations activities for the construction and maintenance of a secure and safe society and traffic environment.



Kadena Police Station
098-956-0110